

# CYTOFUGE - 3200

## CYTO CENTRIFUGE



EPCC / PRODUCTS / APPLICATION / SOFTWARE / ACCESSORIES / CONSUMABLES / SERVICES

**Analytical Technologies Limited**

An ISO 9001 Certified Company

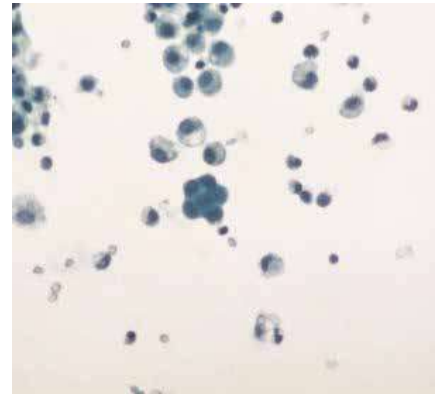
[www.analyticalgroup.net](http://www.analyticalgroup.net)

## ►► FEATURES :

The Cytofuge cytocentrifuge 3200 is a complete system for depositing cells onto microscope slides. The Cytofuge has touchscreen controls, and an eight place rotor that accepts single, double or large volume chambers.

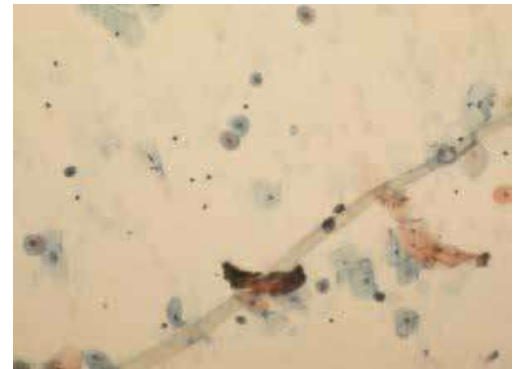
## ►► SIMPLE TO PROGRAM :

Cutting-edge microprocessor control and user programmability provides programming versatility. In addition to manual programming, you can store up to twelve frequently used combinations of rotation speed (100-2000 rpm), run time (1-99 minutes), and rotor acceleration (Low, Medium or High). Programs are easy to retrieve or clear. The user-friendly display visually confirms inputs, current settings, or operation cycle status.



## ►► ROTOR PROTECTS THE SAMPLE AND THE USER :

The Cytofuge rotor uses centrifugal force and three proprietary chamber designs to sediment cells onto slides with maximum safety and user convenience. The shallow profile makes sample ID easy, and loading and unloading samples is convenient in a biological safety hood. Simply pipette sample fluid directly into the sample well. Slides and samples load securely into the rotor without fumbling. After the run, the chamber release lever cleanly separates the chamber from the slide. Both the slide and the sample chamber can then be easily removed. Cytofuge's unique ergonomic design leaves no chance of smearing your cells.



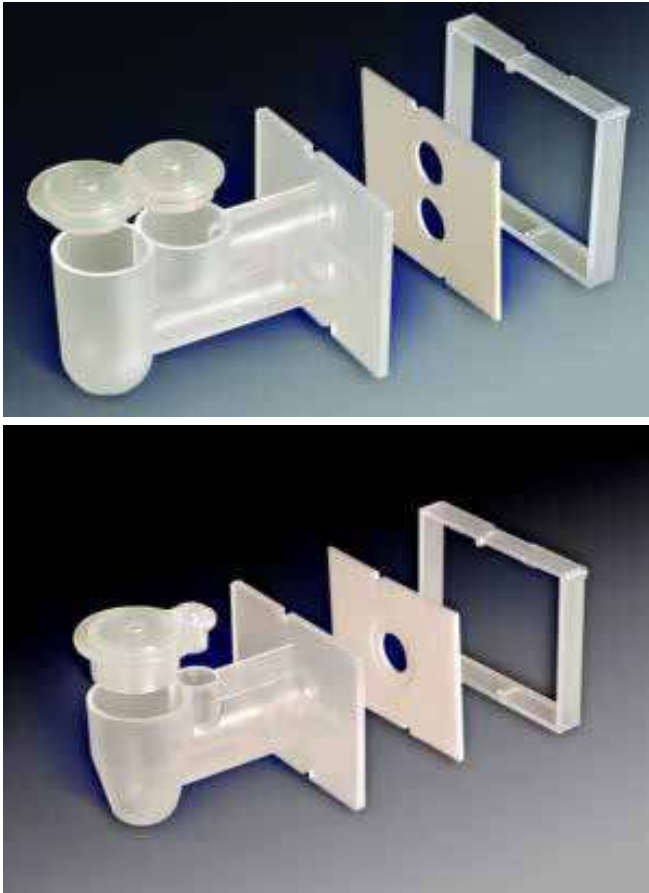
With the standard volume (single or dual) chambers, suspension fluid is simultaneously absorbed into the Cytopad absorption pad as cells contact the microscope slide.

With the Cytofuge Magnum large-capacity chamber, the suspension fluid is removed by an absorbent foam pad by the end of the run.

Standard volume chambers can be discarded with the used Cytopad, or can be autoclaved and reused with a fresh Cytopad.

## ►► CYTOFUGE CHAMBERS :

The Cytofuge sample chambers are the heart of the Cytofuge system. They combine ease of use with superb cell recovery. Innovative standard volume chamber designs make loading and pad alignment simple and foolproof. The semi-transparent sample chamber allows visual confirmation of correct sample volume. Patented flow control delivers consistent results. Dual addition ports allow pre-wetting—for excellent cell recovery. Because damaged spring clips can affect recovery, we use reliable coil springs instead. Standard chambers come in single and dual configurations to suit every need.



►► **Specification :**

Chamber Volume	Dual 0.3 mL per well (0.6 mL per chamber);
	Single 0.5 mL per chamber;
	Magnum 6.0 mL per chamber
Rotor Slide Capacity	Up to 8 slides and Cytofuge chambers
Rotor Speed	100 to 2000 rpm ( $\pm 5\%$ ) user programmable.
Operating Time	Programmable 1 to 99 mins
Dimensions (W x H x D)	43 cm x 25 cm x 54 cm (17" x 10" x 21")
Clearance Height (lid open)	58 cm (23")
Weight	10.4 kg (22.5 lb.)
Electrical Requirements	100 to 240 V ( $\pm 10\%$ ) @ 50-60 Hz
Fuses	2.0 Amp time-lag (Type T) (5 x 20 mm) (2 required)
Power Consumption	200 Watts Maximum
Safety	Lid Interlock: lid must be closed for operation, and is locked down during rotor rotation

## Regulatory compliances



## Corporate Social Responsibility



**Analytical**  
**Foundation**

Analytical Foundation is a nonprofit organization (NGO) found for the purpose of:

1. Research & Innovation Scientist's awards/QC Professional Award : Quality life is possible by innovation only and the innovation is possible by research only, hence ANALYTICAL FOUNDATION is committed to identify such personalities for their contributions across various field of Science and Technology and awarding them yearly. To participate for award, send us your details of research / testing / publication at [Info@analyticalfoundation.org](mailto:Info@analyticalfoundation.org)
2. Improving quality of life by offering YOGA Training courses, Work shops/Seminars etc.
3. ANALYTICAL FOUNDATION aims to DETOXIFY human minds,souls and body by means of yoga, Meditation, Ayurveda, Health Care, Awards, Media, Events, Camps etc.

## Reach us @



 **Analytical**®  
Technologies Limited

HPLC Solutions   MultipleLabs   Analytical Bio-Med   Analytical Distributors   Analytical Foundation (Trust)

**Corporate & Regd. Office:**  
Analytical House, # E67 & E68,  
Ravi Park, Vasna Road, Baroda,  
Gujarat 390 015. INDIA

T: +91 265 2253620  
+91 265 2252839  
+91 265 2252370  
F: +91 265 2254395

E: [info@hplctechnologies.com](mailto:info@hplctechnologies.com)  
[info@multiplelabs.com](mailto:info@multiplelabs.com)  
[info@analyticalgroup.net](mailto:info@analyticalgroup.net)  
[info@analyticalbiomed.com](mailto:info@analyticalbiomed.com)

W. [www.analyticalgroup.net](http://www.analyticalgroup.net)  
[www.hplctechnologies.com](http://www.hplctechnologies.com)  
[www.multiplelabs.com](http://www.multiplelabs.com)  
[www.ais-india.com](http://www.ais-india.com)

Sales & Support Offices:  
across the country :  
Distributors & Channel  
partners World Wide